



## SMD CRYSTAL OSCILLATOR

## 7.0\*5.0 OSC

- . Very corthpact and thin(7.0\*5.0\*1.8mm MAX)
- . Frequency range of 25M~156.250M
- . Tri-State Enable/Disable, LV-PECL Ouput
- . Ideal for Fiber-optic communication applications, FTTH and SONET/SDH applications, Sever, FCHBA, Fibre Channel, Gigabit Ethernet, and Serial ATA

No.	Item	Symb.	Electrical Specification				Remark
			Min.	Type	Max.	Units	
1	Nominal Frequency	F0	25~156.250			MHz	
2	Frequency Stability		±25PPM/±50PPM/±100PPM			All condition*	
3	Operating Temperature Range	TOPR	-20~70℃/-40~85℃				
4	Storage Temperature	TSTG	-55~125℃				
5	Power supply Voltage	VDD	2.5V/3.3V				
6	Aging Per Year	Fa	±5PPM			First Year	
7	Supply current	Ic	90mA MAX				
8	Output symmetry	Sym	40		60	%	
9	Rise time	Tr	1			ns	20%~80%VDD
10	Fall time	Tf	1			ns	80%~20%VDD
11	Output voltage	VOH	90%			VDD	
		VOL			10%	VDD	
12	Output load HCMDS LOAD					PF	
13	Start up time		10			mS	
14	Pin 1, tri-state function	pin 1=H or open.....output active at pin 4, 5 pin 1=L.....high impedance at pin 4, 5					
15	Package type	SMD7.0*5.0					

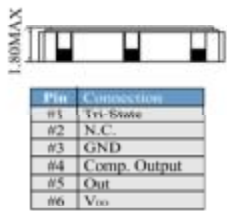
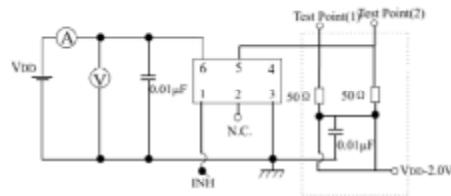
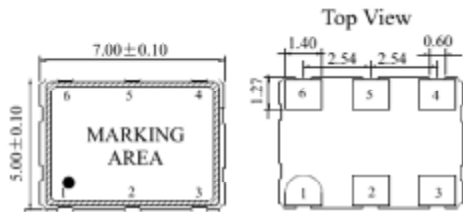


HUBEI JINGMAO ELECTRONICS CO., LTD.

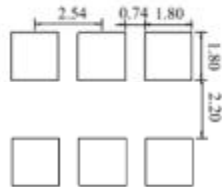
湖北晶茂电子科技有限公司

## CRYSTAL OSC SMD 7.0\*5.0 LV-PECL DIMENSION

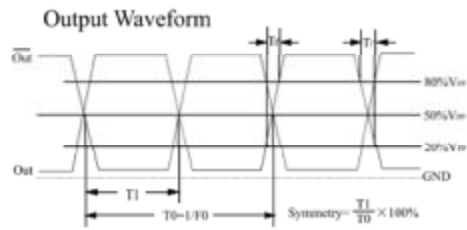
PACKAGE DIMENSIONS:Unit: mm



Recommended Solder Pattern



Pin	Connection
#1	V <sub>CC</sub> -Enable
#2	N.C.
#3	GND
#4	Comp. Output
#5	Out
#6	V <sub>DD</sub>



\*\*Note: 0.01μF bypass capacitor should be placed between V<sub>DD</sub>(Pin6) and GND(Pin3) to Minimize power supply line noise